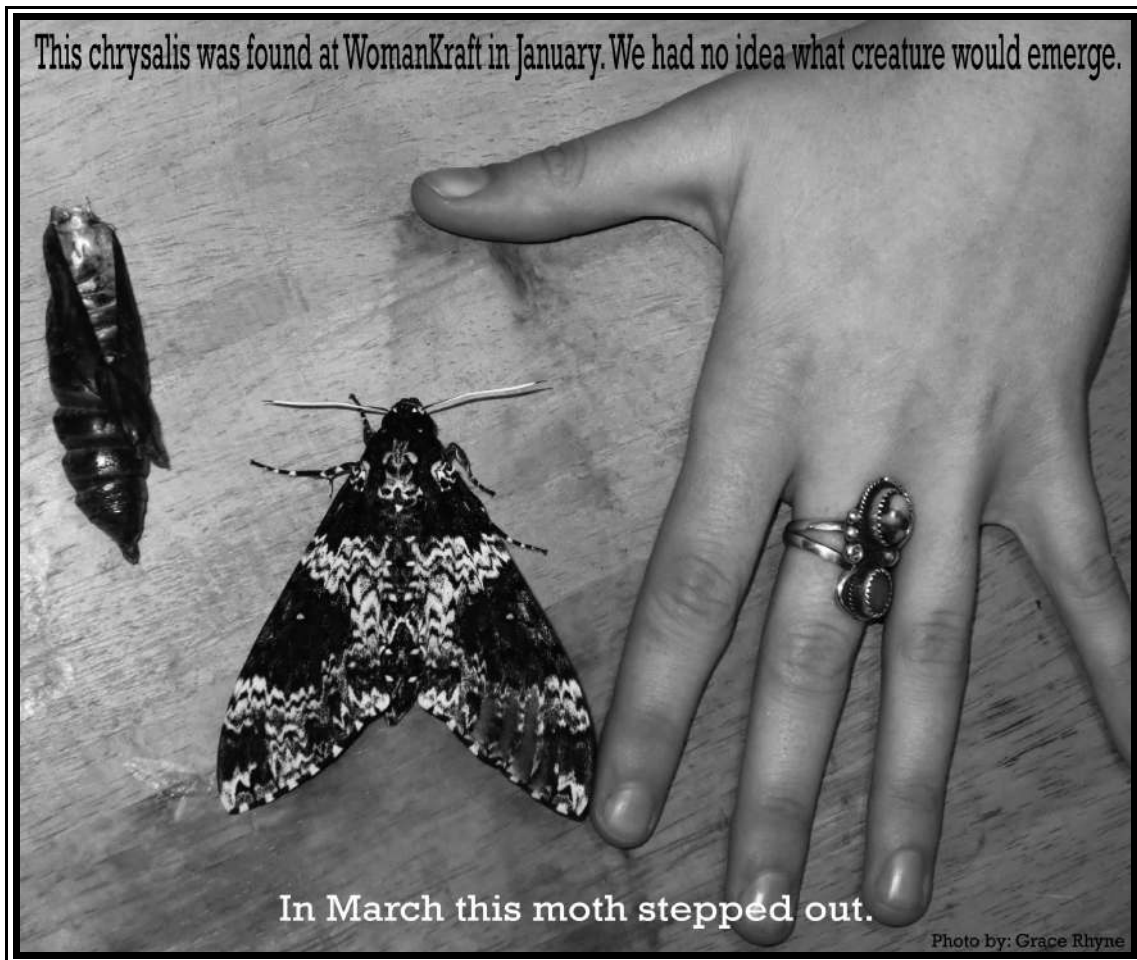


# The Castle Voice

---

May-August 2013 WomanKraft Art Center's Newsletter Volume 40



388 S. Stone Ave. Tucson, Arizona 85701 (520) 629-9976  
[www.womankraft.org](http://www.womankraft.org)

# Castle Voice

*Mysteries of the WomanKraft Castle Center for Art, Education and Culture, Revealed*

**WomanKraft is a Non-Profit Arts Organization founded in 1974 to claim, validate, and empower women artists and other under-represented groups.**

---

## Directors and Coordinators at WomanKraft

### Executive Director

Grace Rhyne  
629-9976 ext 1

### Director of Exhibits and Founder of The School of the Arts

Gayle Swanbeck  
629-9976 ext. 2

### Membership Services

Nancy Martin & Sophia Morano

### WomanKraft Website:

[www.womankraft.org](http://www.womankraft.org)

### Castle Voice Editor

### Assistant Director of Exhibits

Zoe Rhyne  
[zoeorawr@gmail.com](mailto:zoeorawr@gmail.com)

**For more information, please call (520) 629-9976**

**Hours Wednesday-Saturday, 1:00-5:00pm**

Castle Voice design by Jonathan DuHamel

## Thank You!

WomanKraft thanks the Arizona Commission on the Arts, Tucson Pima Arts Council, The Grand Foundation, our generous members, our gallery docents, theatre supporters and investors, clients, customers, and all our volunteers.



In 1992, WomanKraft purchased the 1918 Queen Anne Victorian that is now the WomanKraft Castle Art Center. It houses our gallery, The School of the Arts, The Sanctuary, an all-natural beauty salon, office and studio of Speak the Speech Theatre, and the Art Studio of Zoe & Grace Rhyne, Lydia Phillips, and Richard Michaels. WomanKraft is located at 388 S. Stone Ave., Tucson, AZ, 85701.

## OFFICERS

Lydia Phillips, President  
Ingrid Aspromatis, Vice President  
Gayle Swanbeck, Treasurer  
Nancy Martin, Secretary

## BOARD MEMBERS

Ana Maria Yañez  
Daniel Reichel  
Debra Jacobson, PhD.  
Gerrie Young  
Giga Soto  
Grace Rhyne  
Gudrun Klostermann  
Joanne Pritzen  
Jordana Silvestri  
Nan Margadant  
Paul Brunelle  
Terri McGuire  
Zoe Rhyne

## CONTENTS

Gallery Schedule. . . . .	Page 5
May Classes . . . . .	Page 7
June Classes . . . . .	Page 8
July Classes . . . . .	Page 9
August Classes. . . . .	Page 10
News & Comments. . . . .	Page 11



**Attention/Attention/Attention/Attention**

# **CHANGES**

The WomanKraft Gallery has closed it's doors for the months of January and June since 1986, beginning immediately, the gallery will be closing in January and August. This is probably a good time to remind our readers that it is only the gallery that closes; classes, workshops, and events continue. The exhibit affected by this is It's All About the Buildings. Look to the gallery schedule on page 5 for all the details. This change also affects our second Rummage Fair Boutique. Look to page 14 for details.

Receptions are the first Saturday of each month from 7-10pm. Regular hours are 1-5pm, Wednesday through Saturday. Call to Volunteer 629-9976 ext 2 or call Grace Rhyne at 629-9976 ext 1.

## **STARR MOUNTAIN RESCHEDULED**

Life occasionally throws us some curves and this is it for me. Several actors who originally wanted to participate were forced by their own 'curves' to cancel, and it has not worked out being able to replace them. So rather than drive myself crazy attempting to pull it all together, I've made the decision to simply reschedule to July 26, 27, and 28. The Friday and Saturday performances will be at 7:00pm, doors open at 6:45pm and a Sunday Matinee at 2pm, doors opening at 1:45pm. Tickets will be \$7.00 for WomanKraft members and \$10.00 for the general public. Reservations and pre-payment required. If you would like to audition, please call Gayle Swanbeck at (520) 629-9976 ext. 2. Five female roles, one male role and one very well trained dog role available.

## **FILIPINA ART SHOW CANCELED**

It is with a great sense of disappointment and sadness that I announce the cancelation of the show "Filipina Artists" which was to be held at the WomanKraft Gallery September/October 2013 in Tucson, Arizona.

We had a good group of women artists and a number of paintings already framed and ready to hang. We ran into clearance problems when we began to explore shipping options for the paintings. The situation became too difficult for me to handle as an individual. My deepest apologies to all of those involved.

Thank you for all the help and support and understanding which came from Gayle, Grace, and Zoe at WomanKraft and the many Filipina artists who were involved with the project. -Mary Ng

## **WOMANKRAFT CASTLE'S HISTORIC STATUS CONFIRMED!**

On March 27, Demion Clinco, President of the Tucson Historic Preservation Foundation, met with Nancy Martin and Grace Rhyne at the Castle to perform a consultation and evaluation on how we may better utilize our wonderful building to further our mission. He did confirm that the Castle is on the National Historic Register as a contributing property to the Barrio Libre (Barrio Historico) Historic District! Demion has an eye trained in architecture and historic preservation and suggested that removing two trees would immediately increase our visibility from the street. He also informed us that the beautiful turret on our castle is one of three original turrets in Tucson! Tearing

off the ramshackle, non-conforming, addition over the porch would greatly increase the visual appeal of the building as would some attention to paint and window restoration. Demion also had practical suggestions that we apply for restoration funding from the Arizona Heritage Fund as soon as their funds are restored by the legislature. There is also possible funding from the City of Tucson under their Community Development Block Grants. About \$1 million a year comes from HUD for this purpose and we would need to contact our Councilperson Regina Romero about getting \$20,000 to \$50,000 from this source. We can also leverage our historic appeal by researching the original owners and adding information about the history of the Castle to our information.

Demion has offered to gather some colleagues and facilitate a workshop to renovate the front upstairs porch and address paint and window issues. At this point we really need help from our members to get our renovations started. Can you spare a few hours to make preliminary phone calls or do some historic research? Please call Nancy at 622-1506 or leave a message for Grace at 629-9976 ext. 1. Together we will keep our castle the beautiful Victorian lady she is!

## **NOTES FROM GAYLE SWANBECK**

### **THANKS**

#### **Linn Lane Memorial Celebration**

With over 200 people attending, it was a beautiful and fitting memorial for the person who led WomanKraft from meeting in member's homes and hanging exhibits in alternative spaces to the ownership of the Castle.

It was risky, hard work, and totally visionary. I want to thank her family who traveled here from Farmington and Albuquerque, New Mexico, especially her brother and sister-in-law Wayne and Marty from Bayfield, Colorado. The gallery was filled with her poetry, plays, art and photographic glimpses of her life. For all the people who spoke so lovingly about her and their personal experiences, again a special thanks. Finally, to you, Gerrie Young, blessings for the two beautiful ceramic urns you created; one for the return with her family to Colorado (the place of her birth) and the other to remain here at the Castle, her legacy to Tucson.

### **MORE THANKS**

#### **Rummage Fair Boutique**

Thanks to all the workers who have helped with our first January Rummage Fair Boutique. The actual hours the fair is open is a huge commitment, but is only the tip of the ice berg compared to all the sorting, packing, delivering, storing, unpacking, displaying, pricing, advertising, and cleaning up. This rummage fair brought in \$1,824.00 in two days. What a success! Thank you. Lydia Phillips, Zoe Rhyne, Grace Rhyne, Josh Smith, Lonni Lees, Joanne Pritzen, Paul Brunelle, Richard Michaels, Gerrie Young, and Shari Murphy.

### **AND MORE THANKS**

Thanks to all the people who helped with our February/March and April/May Exhibits. So much work, such great energy; ending with wonderful exhibits. Blessings on Zoe Rhyne, Grace Rhyne, Josh Smith, Bhavani Devi, Diane C. Taylor, Nancy Martin, Richard Michaels, Glen Wilby, Lonni Lees, Jana Corkran-Beckel, Gerrie Young, Debra Jacobson, Fred and Heather Gonneville, and Morgan Cooper. In love and gratitude, Gayle Swanbeck.

# Gallery Schedule

## **June 1 – July 27, 2013: It's All About the Buildings**

Receptions: June and July 6, 7:00-10:00pm

This exhibit will include images of buildings from city scapes to architectural details, old or new, being built or in ruins, from anywhere in or on this planet. All mediums accepted. From this broad description keep in mind we're first looking for the unique. Deadline for submissions: May 18, 2013.

## **GALLERY ONLY CLOSED IN AUGUST 2013**

### **Sept. 7-Oct. 26, 2013: Illumination**

Receptions: September 7 and October 5, 7:00-10:00pm

Lighting up the arts by art-ing up the lights! Form and function meet in this show. All art must be a form of illumination, lamps, votives, candle holders, candles, light boxes, imagination is the limit! Deadline for submission: August 24, 2013.

### **November 2 – December 21, 2013: THE HOLIDAY BAZAAR 2013**

Receptions: November 2 and December 7, 7-10pm

It's our 27<sup>th</sup> annual Holiday Bazaar, and we're seeking local artists and crafts people who's work reflects the diversity of the Holiday Season. All work must retail from \$1-\$100. All mediums accepted. Deadline for submissions: October 26.

## **GALLERY ONLY CLOSED IN JANUARY 2014**

### **February 1- March 29, 2014: FIBER, PAPER, METAL, GLASS**

Receptions: February 1 and March 1, 7-10pm

This show's emphasis is on functional art but does not exclude fine art pieces, but as usual, we're looking for the well-crafted and unique. Deadline for Submissions: January 25, 2014.

### **April 5-May 31 2014: DRAWING DOWN THE MUSE**

Receptions April 5 and May 3, 7-10pm

This is our 22nd Annual women's only exhibit by and for local women artists. All mediums and subject matter accepted. Deadline for submissions: March 22, 2014.

### **June 7-July 26, 2014: Close Up/ Far Away**

Receptions: June 7 and July 5, 7:00-10:00pm

Each submission must be an artists look at their subject matter both close up and far away. The close ups will be exhibited in one section of the gallery and its companion piece in a separate section. Can the viewers guess what they're looking at in the close up? All mediums accepted. Let's have some fun with this one. Deadline for submission: May 24, 2014.

## **ONLY GALLERY CLOSED AUGUST 2014**

### **September 6- October 25, 2014: Falling into Fall**

Receptions: September 6 and October, 4, 7:00-10:00pm

Accepting art in all mediums for this exhibit on my personal favorite time of year, Autumn. Autumn is a time of change, reflected in colored foliage, the migration of species, the Autumn Equinox and Hallomas, the Wiccan New Year. Deadline for submission: August 23, 2014.

### **Are you an artist interested in exhibiting with WomanKraft?**

Call: 629-9976, ext. 2 for appointments with Director of Exhibits, Gayle Swanbeck. Artists please note: All shows are filled from first to respond. Deadlines indicate the LAST DAY works will be viewed, not the first. Hence, should you be interested in an exhibit, make contact A.S.A.P.



Sarasota by Dinah Juergens



Eclipse by Arienne Ellis



A Tucson Door by Laura Leighton



Dark Winter Wood by Lonni Lees

# WOMANKRAFT School of the Arts

## CLASSES AND WORKSHOPS

### Welcome to the WomanKraft School of the Arts

All classes and workshops are free to low income people 50 years and older. This is made possible by the generous support of The Grand Foundation. Thank you. All classes and workshops are open to adults of all ages for listed fees. Your class fees help us offer more classes and pay instructors. Please note: Pre-registration is required for all students. Fee students must pre-pay before you will be registered.

**YEAR-ROUND CLASSES: STUDIO PAINTING WITH GAYLE SWANBECK, ARTIST AND DIRECTOR OF EXHIBITS AT WOMANKRAFT AND FOUNDER OF THE SCHOOL OF THE ARTS.**

Studio classes are ongoing, join anytime, stop when you are ready. Learn oils, acrylic, or watercolors. Select your own subject matter and proceed at your own pace. Individual instruction is available as you need it. Class limit is 6 people. Classes Wednesday, 10:00am-Noon; Thursday 1:00-3:00pm, and 6:00-8:00pm. FEE: \$60 per 8 weeks. Supplies not included.

### MAY 2013

#### INTERMEDIATE EMBROIDERY

This workshop is for the student who wants to take their beginning embroidery knowledge and actualize it into a more finished piece. It will review basic stitches based upon individual needs. Bring along an idea and your garment, hanky, pillowcase etc.

Friday, May 3, 1:30-4:30pm

Facilitator: Barbara Schnauss

Fee: \$20 supplies included.

#### FLAT STAINED GLASS MOSAIC 2 Parts

Create an 8"x10" mosaic with an abstract or realistic design while learning to use the tools and tricks of the medium. It's great fun and stained glass is always beautiful.

Part I: Monday, May 6, 6-9pm

Part II: Monday, May 13, 6:30-8:30pm

Facilitator: Gayle Swanbeck

Fee: \$20 supplies included

#### PAINTING WITH OILSTICKS 2 Parts

You'll learn to create beautiful artworks with this unique oil painting medium. It'll free up your style!

Part I: Tuesday, May 7, 6:30-8:30pm

Part II: Tuesday, May 14, 6:30-8:30pm

Facilitator: Mary Theresa Dietz

Fee: \$20 supplies included

#### COLLAGING CHAIRS

We'll have fun designing and executing collages on the Gallery chairs. The skills are easily translated to all types of furniture. A great way to recycle old pieces into something fresh and reflective of your personal taste.

Wednesday, May 8, 1-5pm

Facilitator: Gayle Swanbeck

Fee: Free

#### WIND CHIMES AND SUNCATCHERS

In this workshop, we will use a variety of pretty, dangling, shiny, colorful, metallic, recycled materials to create something lovely to hang in your yard.

Friday, May 10, 1:30- 4:30pm

Facilitators: Grace and Zoe Rhyne

Fee: \$20 supplies included.

#### INDOOR MURALING 2 Parts

You'll learn the techniques of working with stained glass, tile, mirror, and the tools needed. Part I will be design and execution. Part II will be grouting and cleaning. We'll be muraling on spaces inside the School of the Arts and the Gallery.

Part I: Saturday, May 11, 9:30am-12:30pm

Part II: Saturday, May 18, 9:30am-12:30pm

Facilitator: Gayle Swanbeck

Fee: Free

#### IT'S KNOT EMBROIDERY

You'll learn a variety of knots, wraps, and stitches, while creating a small wall hanging. These easy techniques are applicable to many other craft projects.

Wednesday, May 15, 1:30-3:30pm

Facilitator: Ana Yanez

Fee: \$20 supplies included

#### CHOLLA LIGHT STICKS

This workshop uses the interior wood of dead cholla cacti to create a beautiful organic illuminated cholla stick. Richard will first demonstrate the cleaning and bleaching of the wood. Next, each participant will learn how to install the interior lights and decorate their own unique cholla wood light stick.

Thursday, May 16, 9:30am-12:30pm

Facilitator: Richard Micheals

Fee: \$20 with \$5 supply fee payable to the instructor.

#### NEEDLE FELTING

A Fun and surprisingly easy class, we will learn classic needle felting (dry felting) techniques that can be used to create delightful fiber art figures.

Friday, May 17, 1:30-4:30pm

Facilitators: Grace and Zoe Rhyne

Fee: \$20 supplies included

#### BEAD STRINGING JEWELRY

You can make your own beautiful jewelry in this workshop, while learning how to use special tools and techniques to create long lasting and unique pieces.

Tuesday, May 21, 6-9pm

Facilitator: Terri Mcguire

Fee: \$20 with \$10 supply fee payable to the instructor

## CLASSES & WORKSHOPS

### EXTENDED WEAR

It's time to toss those favorite shoes, hat, pants, or top? Maybe not. Here's an artistic answer to extending the life of your apparel. Come and learn ways to cover stains, holes, and scuffs using paints, buttons, and more. Bring along your piece of clothing

and I'm sure you'll be pleasantly surprised.

Wednesday, May 22, 1:30-4:30pm

Facilitator: Gayle Swanbeck

Fee: \$20 supplies included

### BEGINNING WIRE WRAP PENDANTS

Here's your chance to learn how to use the tools and techniques for making beautiful handcrafted jewelry without the need to know soldering or lost wax casting.

Thursday, May 23, 6-8pm

Facilitator: Jennifer Wilson

Fee: \$20 with \$5 supply fee payable to the instructor

### WISE WOMEN'S WRITING WORKSHOP

You can attend one or all of these popular workshops. Learn to tap your infinite wisdom and playfully connect with your inner writer. We'll journal with writing exercises, topics, and creative surprises.

Friday, May 24, 1:30-3:30pm

Facilitator: Ingrid Aspromatis

Fee: \$20 supplies included

## JUNE 2013

### MAKE YOUR OWN FLAG

Flag day is June 14th, so come and join us to create your own personal banner. Using paints and permanent markers on raw canvas you'll design and execute your own flag. Use humor, spirituality, politics, beauty... it's up to you. Make it and fly it.

Monday, June 3, 6-9pm

Facilitator: Gayle Swanbeck

Fee: \$20.00 supplies included.

### YOU DON'T HAVE TO DRAW A STRAIGHT LINE 3 Parts

These workshops are designed to enrich and develop your drawing skills. Part one will cover light sources, shading, textures, and composition. Part two will find us combining what we've already learned with some easy drawing techniques, making use of geometric shapes to form animals, flora and people. Part three will cover one and two point perspective, and we'll wrap it up with drawing a city street in perfect proportions, light and shadows.

Wednesday, June 5, 12, and 19, 1:30-4:30pm

Facilitator: Gayle Swanbeck

Fee: \$20.00 supplies included.

### ADVANCED WIRE WRAP PENDANTS

This time wire wrap techniques show you the intricacies of wrapping stone or glass crystals in beautiful and varying designs. Bring your own stone

or crystal or purchase from the instructor \$5 each.

Thursday, June 6, 6-8pm

Facilitator: Jennifer Wilson

Fee: \$20.00 supplies included.

### GROUTLESS MOSAIC ART PIECE 2 Parts

Using a 5"X7" picture frame, you'll design and execute your mosaic. In the second half sealing it with a thin coat of resin. It's a way to turn the ordinary into the extraordinary.

Friday, June 7, 1:30-4:30pm, June 14, 1:30-2:30pm

Facilitator: Linda K.

Fee: \$20.00 supplies included.

### A NEW USE FOR MEXICAN ROOF TILES 2 Parts

Using those lovely terra cotta colored curved tiles, we'll design and mosaic the top half of each with stained glass, mirror, old coins and more. They'll be used as the retaining wall for a small raised flower bed here at WomanKraft.

Saturday, June 8, June 15, 9:30am-12:30pm

Facilitator: Gayle Swanbeck

Fee: Free, supplies included.

### STAINED GLASS VOTIVES 2 Parts

Learn to use glass cutters, nippers, etc. It's fun, functional, and always successful.

Monday, June 10, 6-9pm, June 17, 6:30-8:30pm

Facilitator: Gayle Swanbeck

Fee: \$20.00 supplies included.

### ALPHABET SOUP

Enjoy a hot steaming bowl of recycled reading! In this workshop we will be taking lines and words from old poetry books and using them to create our own new poems. For those of you who have a hard time coming up with your own words but long for the thrill of writing a good poem, this is the class for you!

Saturday, June 22, 9:30am-12:30pm

Facilitators: Zoe and Grace Rhyne

Fee: \$20.00 supplies included.

### BEADED BOOKMARKS

Using a wide variety of beads you'll create a beautiful and distinctive bookmark while learning the tools and tricks of jewelry making.

Tuesday, June 25, 6-8pm

Facilitator: Terri McGuire

Fee: \$20.00 supplies included.

### HANDMADE GLYCERIN SOAP

You'll have an opportunity to make many bars of this natural vegetable based soap. Use specialty molds, natural oils, organic and non-organic products to customize each bar you make.

Tuesday, June 25, 1:30-3:30pm

Facilitators: Grace and Zoe Rhyne

Fee: \$20.00 supplies included.

## CLASSES & WORKSHOPS

### PAPER FLOWERS

Learn traditional Mexican folk art techniques and create a variety of colorful tissue paper and crepe paper flowers.

Wednesday, June 26, 1:30-3:30pm

Facilitator: Ana Yanez

Fee: \$20.00 supplies included.

### WISE WOMEN'S WRITING WORKSHOP

You can attend one or all of these popular workshops. Learn to tap your infinite wisdom and playfully connect with your inner writer. We'll journal with writing exercises, topics, and creative surprises.

Friday, June 28, 1:30-3:30pm

Facilitator: Ingrid Aspromatis

Fee: \$20.00 supplies included

## JULY 2013

### WATER COLOR COLLAGE 2 Parts

Create unique patterns, while learning many watercolor techniques, then tear, cut, and collage your patterns into works of art.

Monday, July 1 and July 8, 6:30-8:30pm

Facilitator: Gayle Swanbeck

Fee: \$20.00 supplies included.

### COPPER EMBOSSING

In this workshop you'll learn all the techniques needed to create beautiful copper embossed art and choose between making wall adornments, ornaments, a matchbox, or a fine art piece.

Wednesday, July 3, 1:30-4:30pm

Facilitator: Gayle Swanbeck

Fee: \$20.00 supplies included.

### MOSAIC GARDEN STONES 2 Parts

Learn the techniques to make your very own garden stones. Add color and whimsy to your yard or garden. Learn to use glass and tile while having creative fun.

Friday, July 5, 1:30-4:30pm

Friday, July 12, 1:30-3pm

Facilitator: Linda K.

Fee: \$20.00 supplies included.

### BEAD STRINGING JEWELRY

You can make your own beautiful jewelry in this workshop, while learning how to use special tools and techniques to create long lasting and unique pieces. Hey, it's fun to boot!

Tuesday, July 9, 6-9pm

Facilitator: Terri McGuire

Fee: \$20.00 with \$10 supply fee payable to the instructor.

### PSYCHEDELIC JELLYFISH

An interesting and beautiful way to decorate any landscape, come and create your own creature out of antique glass electrical insulators in various shapes, colors and sizes.

Wednesday, July 10, 1:30-4:30pm

Facilitators: Grace and Zoe Rhyne

Fee: \$20.00 supplies included.

### THREE BEAD WIRE WRAP RINGS

Using sterling silver wire and natural stone beads, you'll learn to use the tools and techniques to create two beautiful rings.

Thursday, July 11, 6-8pm

Facilitator: Jennifer Wilson

Fee: \$20.00 with \$10.00 supply fee payable to the instructor.

### ACRYLIC PAINTING AND MULBERRY PAPER 3 Parts

This is an exciting workshop offered to painters interested in playing with special effects. Bring a canvas or canvas board 11"X14" , and we'll supply the rest. The first two workshop will focus on conceptualizing and executing your painting. Copyright free photos will be provided if you need subject matter. In the third workshop you'll learn how to apply a mulberry paper overlay to create a distinctive and beautiful effect.

Monday, July 15, 22, and 29, 6-9pm

Facilitator: Gayle Swanbeck

Fee: \$20.00 supplies included.

### OIL STICKS AND MONOPRINTS

You'll design, using oilsticks on a glass pane painting (8"x10") and pull up to 3 prints. A final application of paint will "clean up" your image, and you'll walk away with a reverse glass painting as well.

Tuesday, July 23, 6:30-8:30pm

Facilitator: Mary Theresa Dietz

Fee: \$20.00 supplies included.

### BEADED STEMWARE

Using wire wrap techniques and glass, metal or natural beads, you'll learn to wire wrap stemware for a unique and personalized look.

Wednesday, July 24, 1:30-3:30pm

Facilitator: Ana Yanez

Fee: \$20.00 supplies included.

### REFURBISHING MATS AND FRAMES

It's two for one in this workshop. You'll learn to create stunning customized frames and mats by restoring old and damaged ones using a variety of beautiful papers, including mango, mulberry, and exotic tissue paper.

Wednesday, July 24, 6-8pm

Facilitators: Zoe and Grace Rhyne

Fee: \$20.00 supplies included.

### WISE WOMEN'S WRITING WORKSHOP

You can attend one or all of these popular workshops. Learn to tap your infinite wisdom and playfully connect with your inner writer. We'll journal with writing exercises, topics, and creative surprises.

Friday, July 26 1:30-3:30 pm

Facilitator: Ingrid Aspromatis

Fee: \$20.00 supplies included.

## CLASSES & WORKSHOPS

### EXTENDED WEAR

It's time to toss those favorite shoes, hat, pants, or top? Maybe not. Here's an artistic answer to extending the life of your apparel. Come and learn ways to cover stains, holes, and scuffs using paints, buttons, and more. Bring along your piece of clothing and I'm sure you'll be pleasantly surprised.

Wednesday, July 31, 1:30-4:30pm

Facilitator: Gayle Swanbeck

Fee: \$20.00 supplies included.

### AUGUST 2013

### SCRATCH ART ON CLAYBOARD

Using pre-prepared black clayboard panels, you'll learn the tools and techniques for this intricate drawing form.

Friday, August 2, 1-4pm

Facilitator: Gayle Swanbeck

Fee: \$20 supplies included

### TISSUE PAPER COLLAGE 2 Parts

Come and learn this beautiful free form art style. Create watercolors/acrylic washes, collage, and then detail your work with additional mediums.

Part I: Wednesday, August 7, 1:30-3:30pm

part II: Wednesday, August 14, 1:30-3:30pm

Facilitator: Ana Yanez

Fee: \$20 supplies included

### DREAM UP SOME GREEN

Using a recycled jar, decorate a money bank with images and ideas while focusing on your financial aspirations.

Friday, August 9, 9:30am-12:30pm

Facilitators: Grace and Zoe Rhyne

Fee: \$20 supplies included

### BEGINNING TIE DYE

Bring your own white cotton, pre-washed (old or new) 1 shirt or 2 pillow cases or 4 napkins, etc. You'll learn the basics for this fun and practical fiber art.

Friday, August 9, 1:30-3:30pm

Facilitator: Linda K

Fee: \$20 supplies included

### MIXING COLORS

Here's a chance to learn all the basics and intricacies of the color wheel. It's easy, its fun, come and join us.

Monday, August 12, 6-9pm

Facilitator: Gayle Swanbeck

Fee: \$20 supplies included

### DRAWING PEOPLE

Using charcoal and graphite, you'll learn some easy and useful techniques for drawing the human form and body details; hair, hands, eyes, etc.

Monday, August 19, 6-9 pm

Facilitator: Gayle Swanbeck

Fee: \$20 supplies included

### HANDMADE GLYCERIN SOAP

You'll have an opportunity to make many bars of this natural vegetable based soap. Use specialty molds, natural oils, organic and non-organic products to customize each bar you make.

Tuesday, August 20, 1:10-3:30pm

Facilitator: Maria Garcia

Fee: \$20 supplies included PLEASE NOTE! class is off site. We leave the Castle at exactly 1:10pm.

### STAINED GLASS MOSAIC VOTIVES 2 Parts

Learn how to use glass cutters, nippers, etc. It's fun, functional, and always successful.

Part I: Wednesday, August 21, 1:30-4:30pm

Part II: Wednesday, August 28, 1:30-3:30pm

Facilitator: Gayle Swanbeck

Fee: \$20 supplies included

### THE ART OF COLLAGE 2 Parts

This workshop will allow each student to explore collaging in several different ways; photo collage with or without words; 3-D collaging, and more.

Part I: Thursday, August 22, 9:30am-12:30pm

Part II: Thursday, August 29, 9:30am-12:30pm

Facilitator: Gayle Swanbeck

Fee: \$20 supplies included

### WISE WOMEN'S WRITING WORKSHOP

You can attend one or all of these popular workshops. Learn to tap your infinite wisdom and playfully connect with your inner writer. We'll journal with writing exercises, topics, and creative surprises.

Friday, August 30, 1:30-3:30pm

Facilitator: Ingrid Aspromatis

Fee: \$20 supplies included

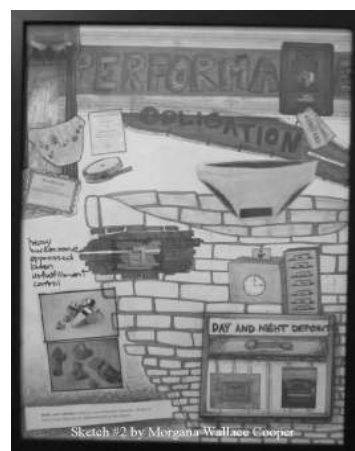
### MANDALAS ON VINYL

In this workshop we will be creating an "endless" art piece, on an old vinyl record album we will paint, draw, and decorate a personal mandala, which will stay beautiful no matter which direction it is viewed from.

Saturday, August 31, 9:30am-12:30pm

Facilitators: Grace and Zoe Rhyne

Fee: \$20 supplies included



## NEWS & COMMENTS

### Progress Reports and Events

Josh Smith designed, built, and installed our new handicap ramp's handrail. It's stunning! The WomanKraft Artist Collective will be creating and donating the stained glass mosaics to finish off the rails. A workshop will be offered next tri-semester to mosaic the side of the ramp facing the parking lot.

### January Clean Up/ Fix Up

Zoe Rhyne, Grace Rhyne, Josh Smith, Paul Rhyne, Richard Michaels, Gerrie Young, and Jana and Jacob Beckel all pitched in to patch walls and ceilings, repaint, clean windows, and re-sealed the wooden floors in the gallery. It looks so good!

### February's Variety Show Event

It was another fun and yummy night of food, drinks, conversation, entertainment and home made desserts. Thanks to all our cooks and bakers, Gayle Swanbeck, Zoe Rhyne, Debra Jacobson, and Mary Carlson. The talent thanks go out to Zoe and Grace Rhyne for their song and dance routine, "Sisters", Robert Villa's violin playing including an impromptu piece composed on the spot, Ingrid Aspromatis raised the temperature of the room with her belly dancing, Grace wowed the audience performing an amazing poem "Thinking about you" and Dan Reichel and Gayle Swanbeck did a teaser reading of the play "Love Letters". Our next Variety Show Event will be May 18, see "Special Events" for details.

### "Love Letters"

Directed by Dan Reichel of the Speak the Speech Theatre Co., "Love Letters" played to full houses in March. Written by A.R. Gurney and acted by Mike Sultzbach and Mary Davis it is a humorous and thought provoking piece with great audience feed back. Congrats to everyone involved.

### Special Events

The **Variety Show Event** Saturday, May 18, 6-10 P.M. Tickets are \$20 each, reservations and pre-payment required. This Variety Show Event will start with dinner from 6-7:30pm. with the main dishes being organic and all natural tabouli, hummus, and stuffed grape leaves, with green salad, fruit, and an array of tempting homemade desserts. From 7:30-9pm Talent will be songs, instrumentals, poetry, dance, and a surprise or two to delight our audience. Only 20 tickets are sold, please be aware that commitment to attend is just that, a commitment.

### Karaoke Night at WomanKraft

Tickets will be \$3 for WomanKraft Members, and \$5 for non-members. Saturday, June 29, 8-10pm. It's a first here at WomanKraft, Karaoke! Lead Talent will

be Terri Mcguire, Grace Rhyne, and Zoe Rhyne. We are doing auditions for other singers, and there will be an opportunity for the shy turned brave to step up to an open mike. Drinks and light snacks available, please call for audition appointments 629-9976 ext. 2.

### Theatre

#### "Starr Mountain"

Friday, July 26 and Saturday July 27th at 7pm. and Sunday, July 28 at 2pm. Tickets \$5 Members, \$7 non-members

"**Starr Mountain**", an original play by Linn Lane, produced by the WomanKraft Mixed Media Players as a staged performance and directed by Gayle Swanbeck, is a quirky tale of the exploits and interactions of homeless and inner city people being moved by the government into an upper middle class desert neighborhood. Characters include Anne, a writer who has inherited a home from her aunt; Fredonia, a homeless woman being aided by her social worker, Marilyn; an eccentric guy named Newport Bob, not from Newport, and Zaaz also not from Newport... or anywhere else you might be familiar with. Reservations and pre payment required. Tickets for our 24 seat house go on sale immediately. Be one of the lucky ones and sign up now!

### 2nd Annual Board Meeting

Saturday August 10, 10am - Noon

Board members, as well as paid members are invited to attend our second board meeting of the year. Call Grace Rhyne, Executive Director, 629-9976 ext.1 or Lydia Phillips, Board President 777-5207 to add business items to the agenda.

### 2nd Annual Rummage Fair Boutique

Friday August 16 and Saturday August 17, 8am to 4pm.

We're seeking volunteers to help with set up Wednesday, August 14th from 1-5 P.M. and Thursday, August 15th from 10 A.M until it's done. We also are scheduling for the Fair dates, as well as cleanup. Donations are gratefully accepted, please call Zoe or Grace here at WomanKraft 629-9976 ext.1 or Lydia Phillips at 777-5207 for deliveries or pickups. Please remember, we accept all types of donations that are clean and fully working. Tax letters are available but you must provide an inventory list. In accordance with federal law we cannot place a monetary value on donated items. All revenue raised goes to the continued castle upgrades that we enjoy so much. Rummage donations accepted all year long. Don't forget to stop in for the sale and spread the word. We've got the best "stuff" at the best prices!

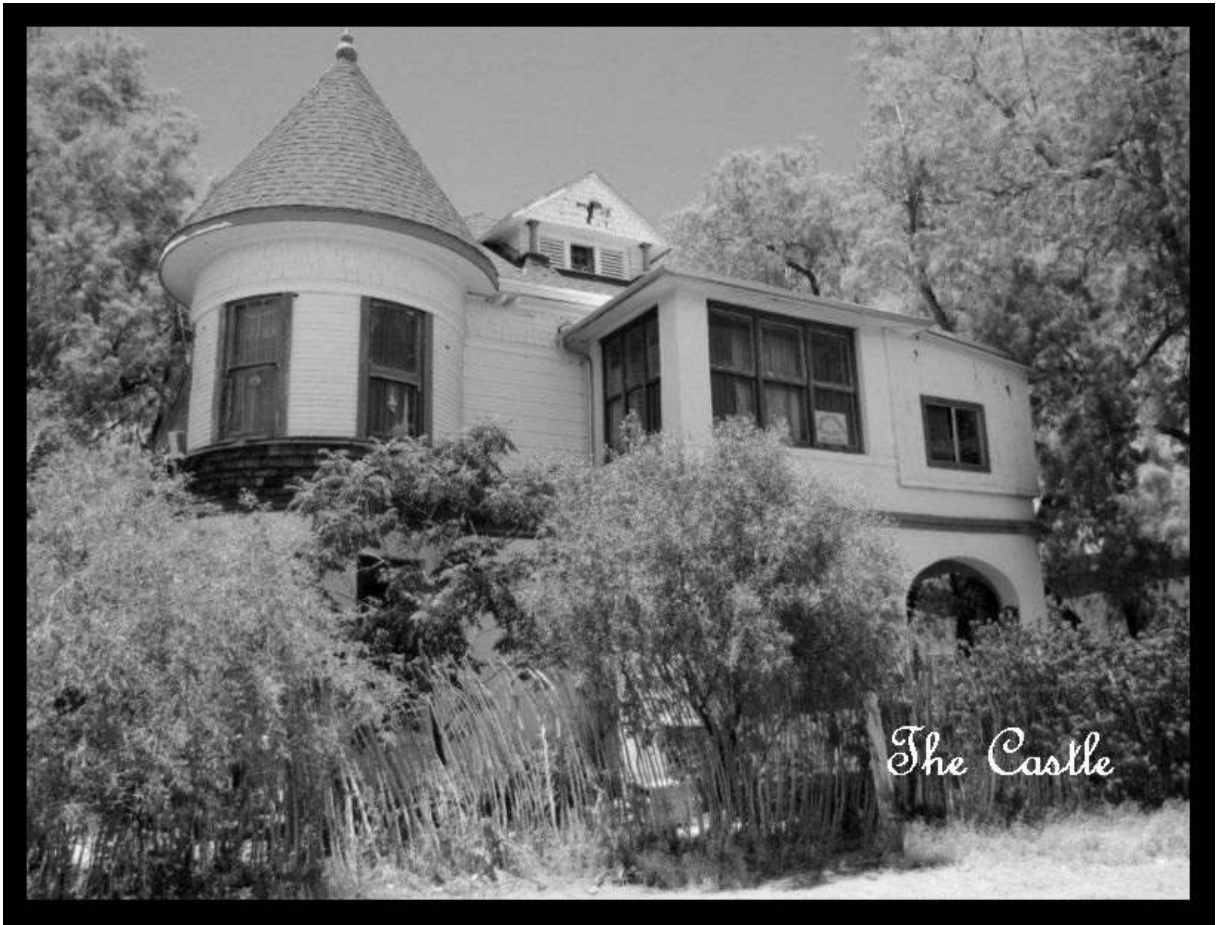
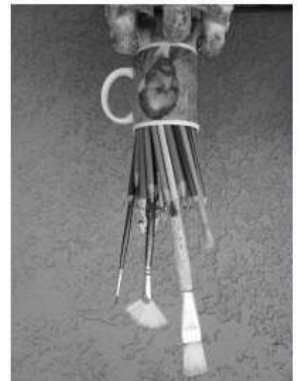


Photo by Jonathan DuHamel



Castle Voice  
388 S. Stone Ave.  
Tucson, AZ 85701  
(520) 629-9976  
[www.womankraft.org](http://www.womankraft.org)